



For Lease

Magnolia Park

- Three, one story flex buildings totaling 80,863 s.f.
- Suites can be modified to increase warehouse square footage
- Built in 2003
- Excellent access to I-95, US-1 and I-295
- Located on ±7.01 acres
- Zoning: IBP- Business Park I
- Grade level access
- Electric: 120/208 volt, three-phase, four-wire service
- Wet pipe sprinkler system

**5220 Shad Road
Jacksonville, FL**

Ross Crabtree

+1 904 559 3915
ross.crabtree@am.jll.com

Luke Pope

+1 904 356 4660
luke.pope@am.jll.com

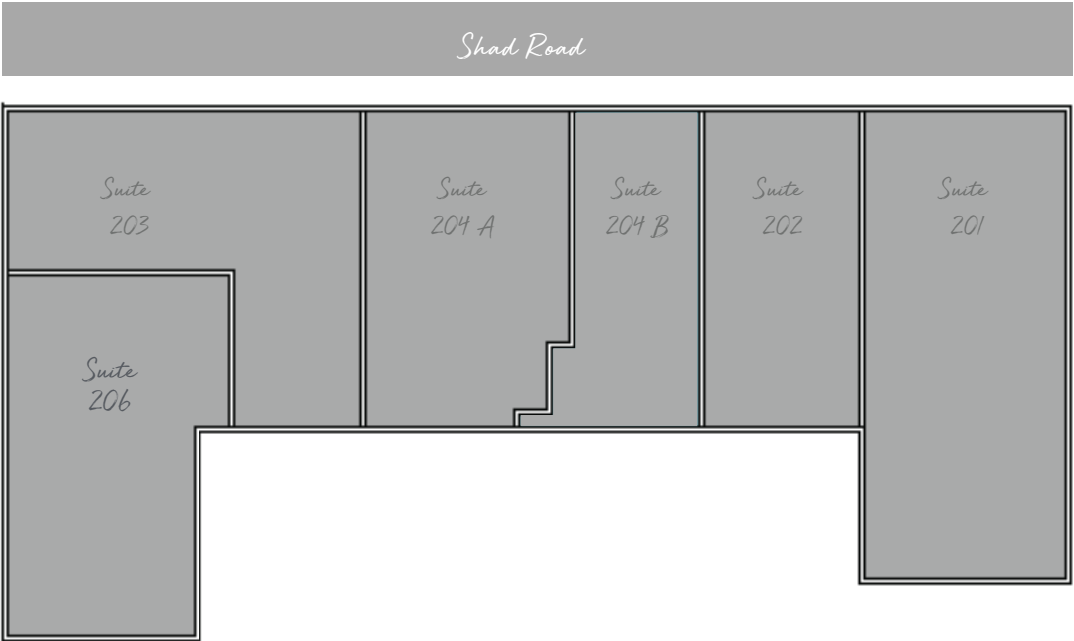
jll.com/jacksonville



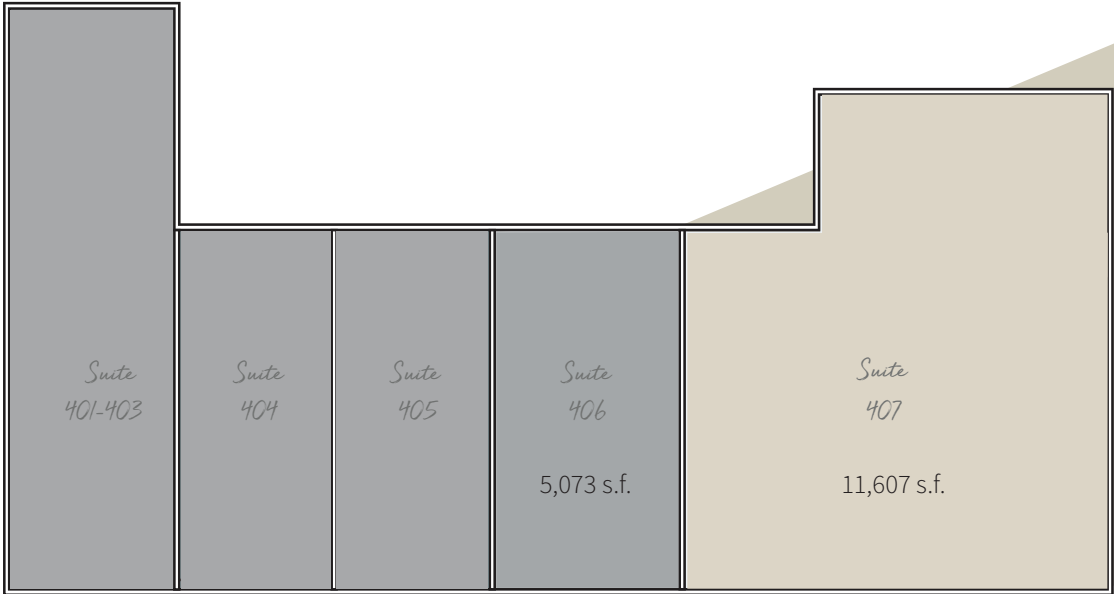
Jones Lang LaSalle Brokerage, Inc. A licensed real estate broker.

Magnolia Park layout

Building 200



Building 400



Building 600

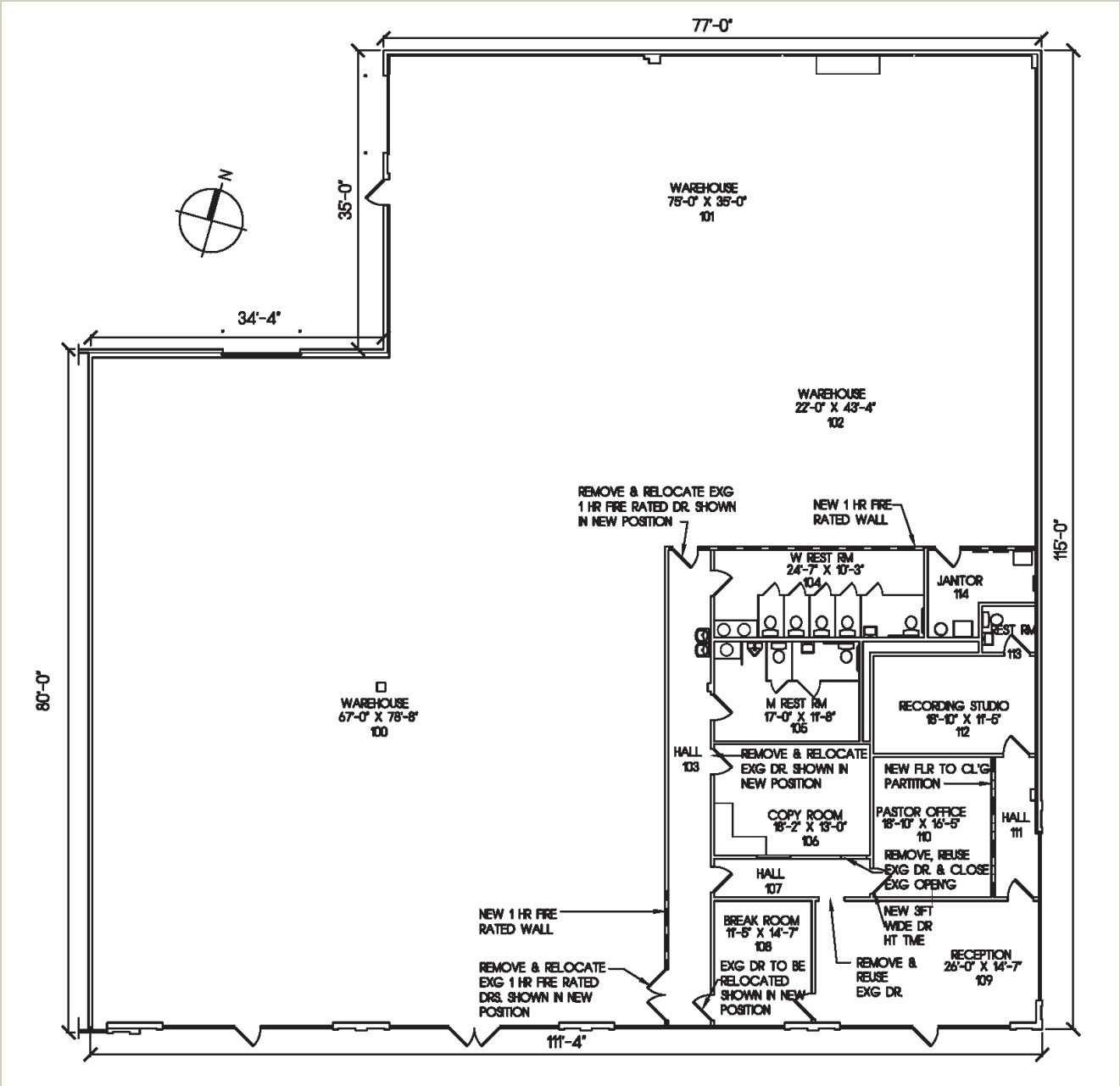


Vacant

Leased

Available space

Suite 407
Proposed plan
11,607 s.f.



Suite	Total s.f.	Clear height	Drive ins
407	11,607	14'	2



DISCLAIMER
 Jones Lang LaSalle Brokerage, Inc. A licensed real estate broker.
 Although information has been obtained from sources deemed reliable, neither Owner nor JLL makes any guarantees, warranties or representations, express or implied, as to the completeness or accuracy as to the information contained herein. Any projections, opinions, assumptions or estimates used are for example only. There may be differences between projected and actual results, and those differences may be material. The Property may be withdrawn without notice. Neither Owner nor JLL accepts any liability for any loss or damage suffered by any party resulting from reliance on this information. If the recipient of this information has signed a confidentiality agreement regarding this matter, this information is subject to the terms of that agreement. ©2021 Jones Lang LaSalle Brokerage, Inc. All rights reserved.

******The outbreak of the COVID-19 virus (novel coronavirus) since the end of January 2020 has resulted in market uncertainty and volatility. While the economic impact of a contagion disease generally arises from the uncertainty and loss of consumer confidence, its impact on real estate values is unknown at this stage.