



# For Lease

**15,400 square feet available**

**World Park @ Union Centre 12**

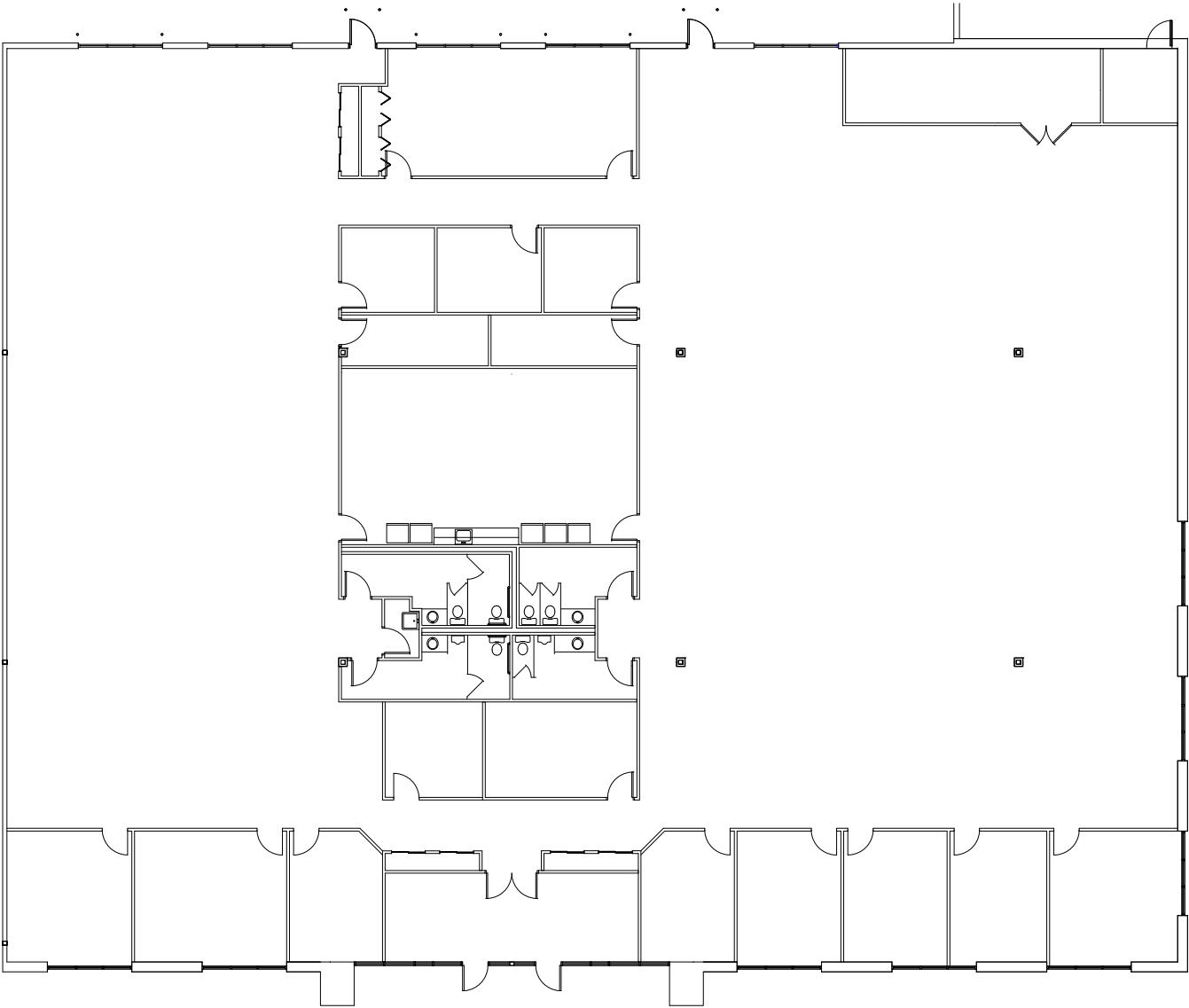
- 15,400 s.f. available
- Corner of Meridian Way & West Chester Road
- Highway access at Union Centre Boulevard to I-75
- No personal earnings tax
- Private access
- M-2 zoning
- Single story office space
- Close to many area amenities
- No load factor
- Abundant free parking

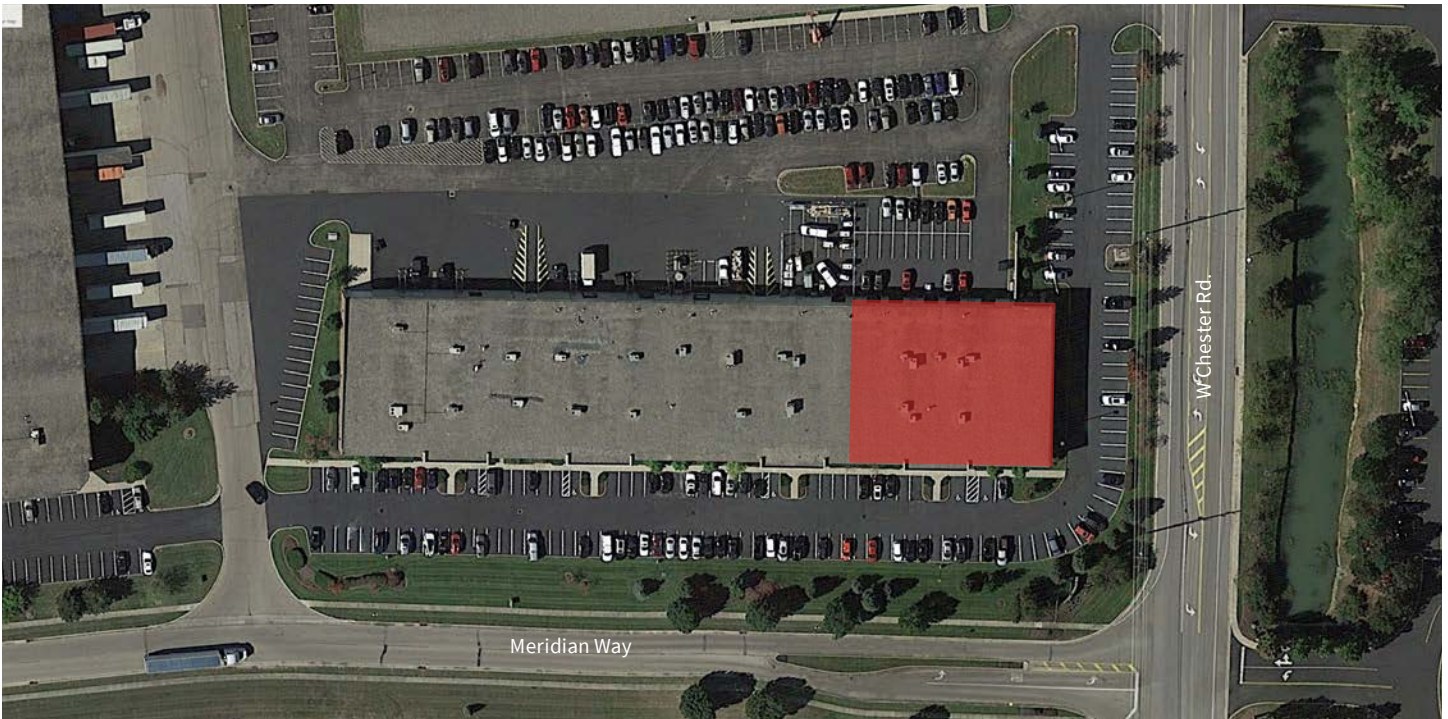
**9021 Meridian Way  
West Chester, OH 45069**

**Mark Volkman**  
+1 513 252 2123  
[mark.volkman@am.jll.com](mailto:mark.volkman@am.jll.com)

[jll.com](http://jll.com)

Floorplan



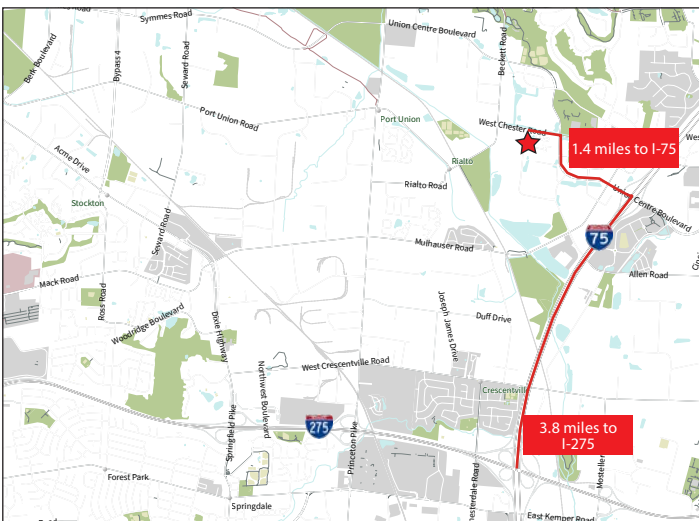


## Building highlights

- Office space: 15,400 s.f.
- Ceiling height: 10'
- Column spacing: 40'w x 37'd
- Building depth: 110'
- Sprinkler: 100% sprinkled
- Ample parking (+/- 4/1,000 s.f.)
- Lots of windows - corner unit with abundant natural light
- Professional business park environment
- Flexible floor plan

## Location

World Park @ Union Centre 12 is located in the heart of West Chester with convenient access to Interstate 75 and Interstate 275.



### DISCLAIMER

©2021 Jones Lang LaSalle IP, Inc. All rights reserved. All information contained herein is from sources deemed reliable; however, no representation or warranty is made to the accuracy thereof.