

FOR LEASE | 51,761 SF

FOUNDRY
COMMERCIAL



5335 DIVIDEND DRIVE

DECATUR, GEORGIA 30035

5.76 ACRES OF EXCLUSIVE OUTSIDE STORAGE AVAILABLE

5335 DIVIDEND DRIVE
DECATUR, GA 30035

FOUNDRY
COMMERCIAL

PROPERTY INFORMATION

- 51,761 SF AVAILABLE
- 14 DOCK DOORS
- 3 DRIVE IN DOORS
- 5.76 ACRES OF EXCLUSIVE OUTSIDE STORAGE
- 22 FT CLEAR HEIGHT
- FULLY SPRINKLERED
- CLOSE PROXIMITY TO I-20



For more information, please contact:

ANDY HEAD

Vice President

☎ 404.713.4601

☎ 404.474.4190

andy.head@foundrycommercial.com

OWNED & MANAGED BY

Dalfen
INDUSTRIAL

3520 Piedmont Road NE, Suite 360

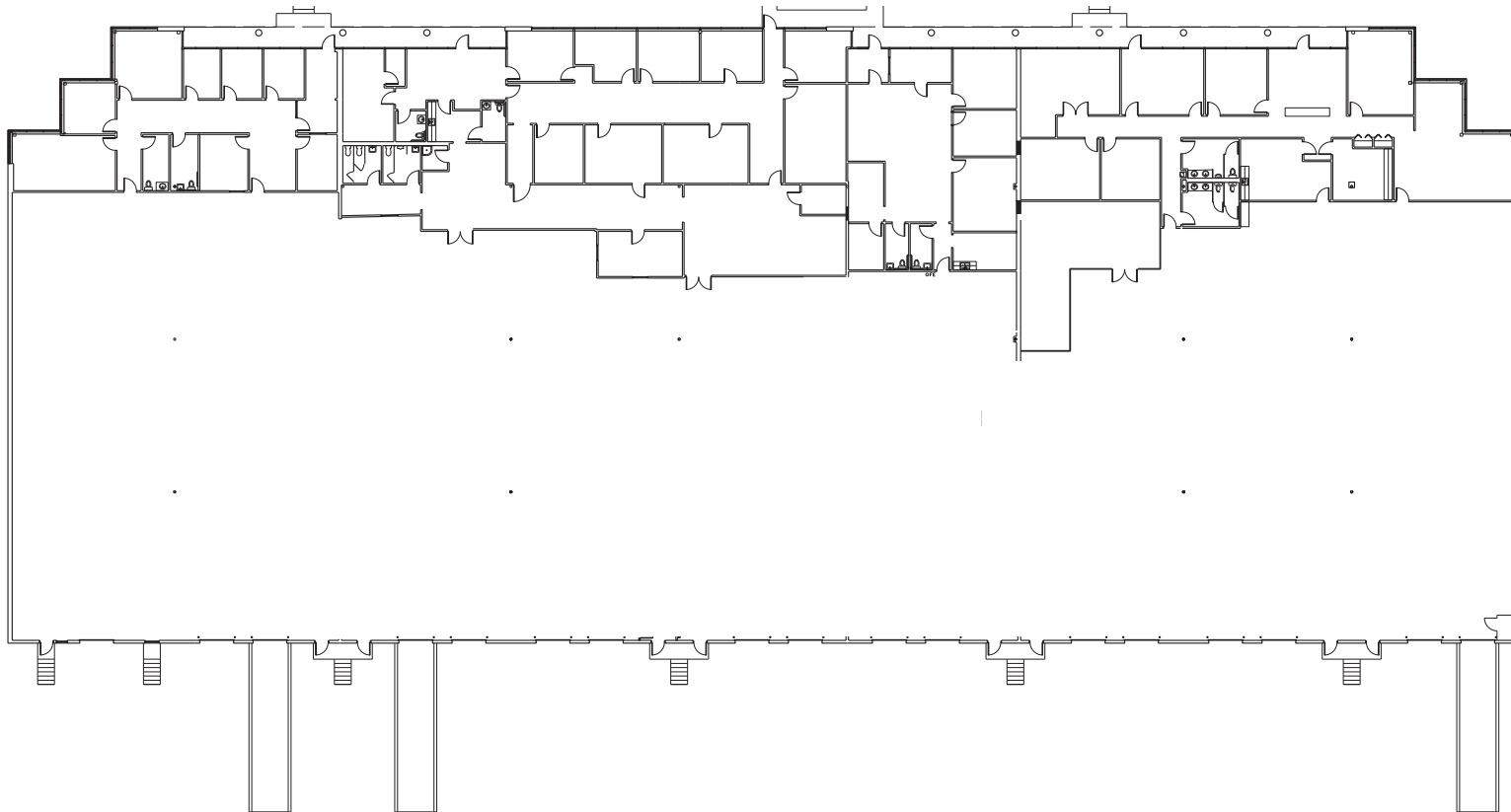
Atlanta, GA 30305

foundrycommercial.com

5335 DIVIDEND DRIVE
DECATUR, GA 30035

FOUNDRY
COMMERCIAL

51,761 SF AVAILABLE



For more information, please contact:

ANDY HEAD

Vice President

☎ 404.713.4601

☎ 404.474.4190

andy.head@foundrycommercial.com

OWNED & MANAGED BY

Dalfen
INDUSTRIAL

3520 Piedmont Road NE, Suite 360

Atlanta, GA 30305

foundrycommercial.com